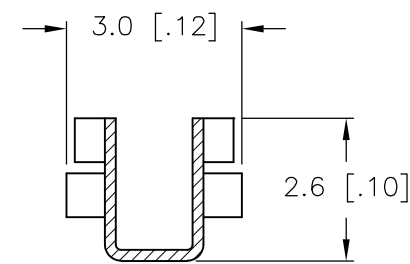
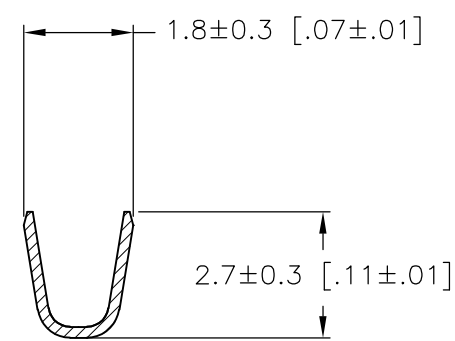
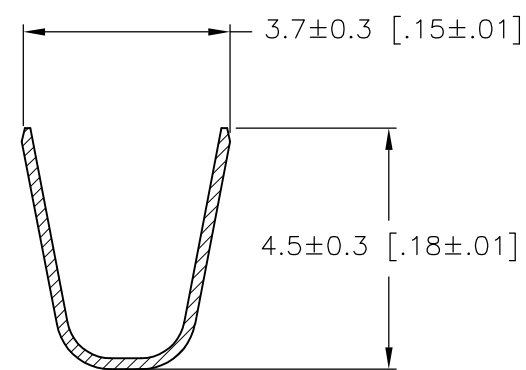
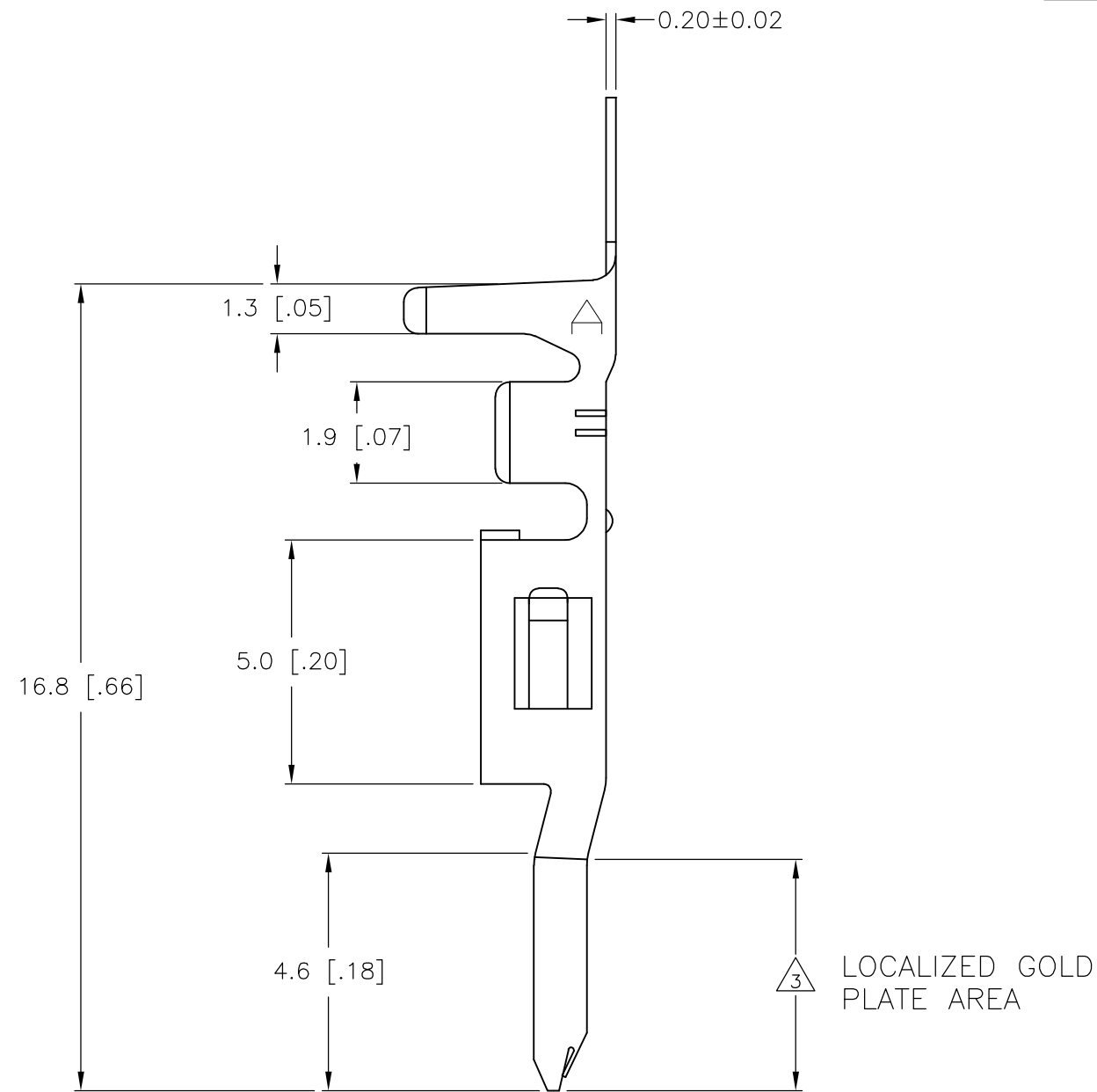
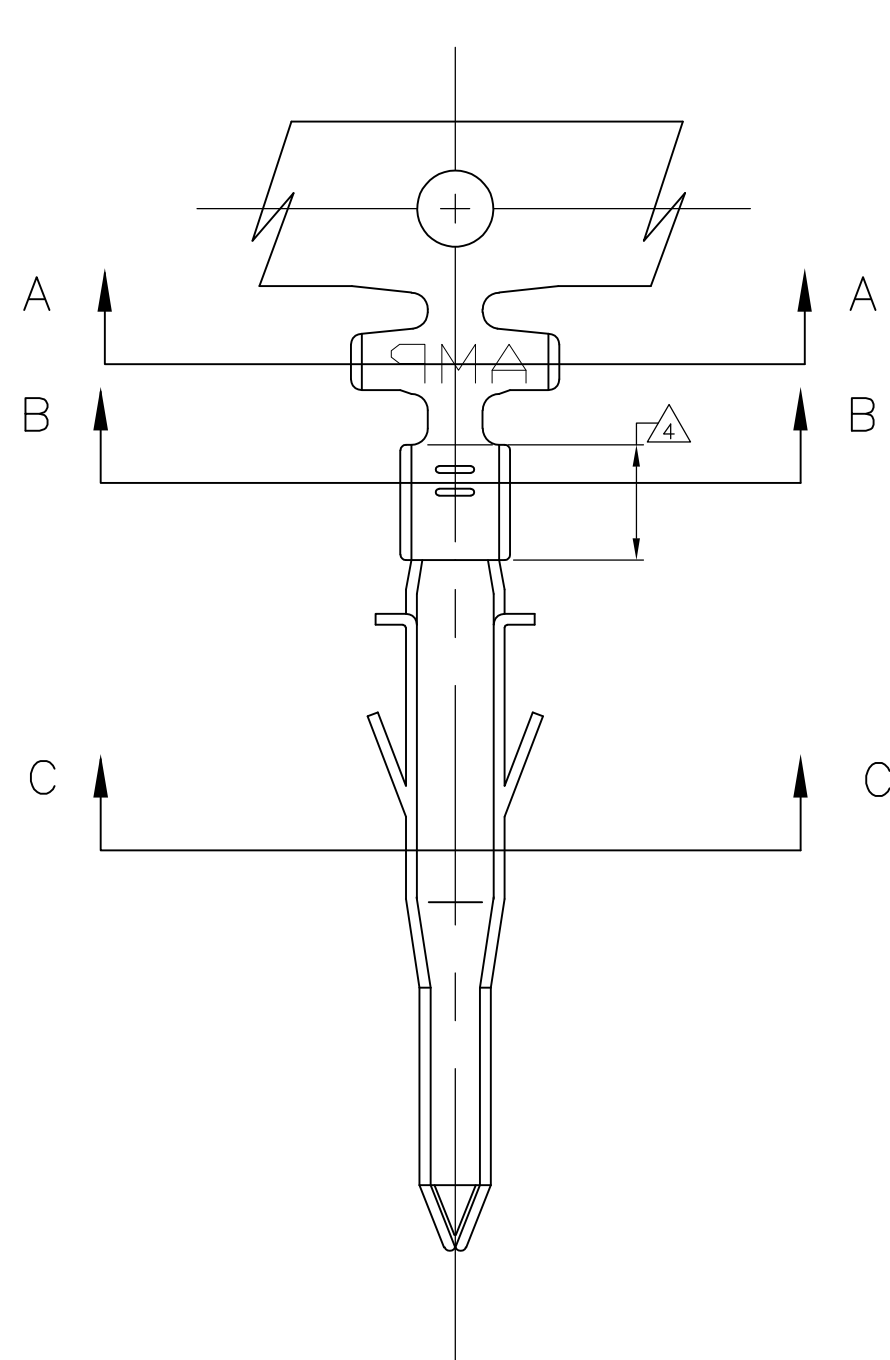


THIS DRAWING IS UNPUBLISHED. RELEASED FOR PUBLICATION
 © COPYRIGHT BY TYCO ELECTRONICS CORPORATION. ALL RIGHTS RESERVED.

LOC	DIST	REVISIONS					
CM	00	P	LTR	DESCRIPTION	DATE	DWN	APVD
		F1		REVISED PER ECO-08-011858	14MAY08	HMR	CC

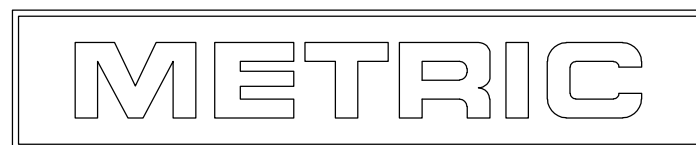
- 1 WIRE RANGE: 0.32-0.82mm² (22-18 AWG)
- 2 INSULATION RANGE: 1.50 - 3.10 DIA.
- 3 FINISH: 0.76μm MINIMUM GOLD IN LOCALIZED GOLD PLATE AREA OVER 1.27μm MINIMUM NICKEL.
- 4 FINISH: 2.54μm MINIMUM PRE-TIN IN LOCALIZED TIN PLATE AREA.



SECTION C-C

SECTION A-A

SECTION B-B



3 4	PHOS. BRZ.	794955-4
PRE-TIN	PHOS. BRZ.	794955-3
3 4	BRASS	794955-2
PRE-TIN	BRASS	794955-1
FINISH:	MATERIAL:	PART NO.

DIMENSIONS:		TOLERANCES UNLESS OTHERWISE SPECIFIED:		APVD		NAME	
mm	[INCHES]	0 PLC	±	S. HAMM	07-SEP-2001	Tyco Electronics Corporation Harrisburg, Pa 17105-3608	
		1 PLC	± 0.25 [.010]	CHK	07-SEP-2001	D. COLEY	
		2 PLC	± 0.15 [.006]	APVD	07-SEP-2001	D. COLEY	
		3 PLC	± 0.050 [.0020]	PRODUCT SPEC		TERMINAL PIN VAL-U-LOK(TM)	
		4 PLC	±	APPLICATION SPEC		SIZE	CAGE CODE
		ANGLES	±	WEIGHT		A2	00779
		FINISH		CUSTOMER DRAWING		DRAWING NO	RESTRICTED TO
						C=794955	-
						SCALE	SHEET
						10:1	1 OF 1
						REV	F1